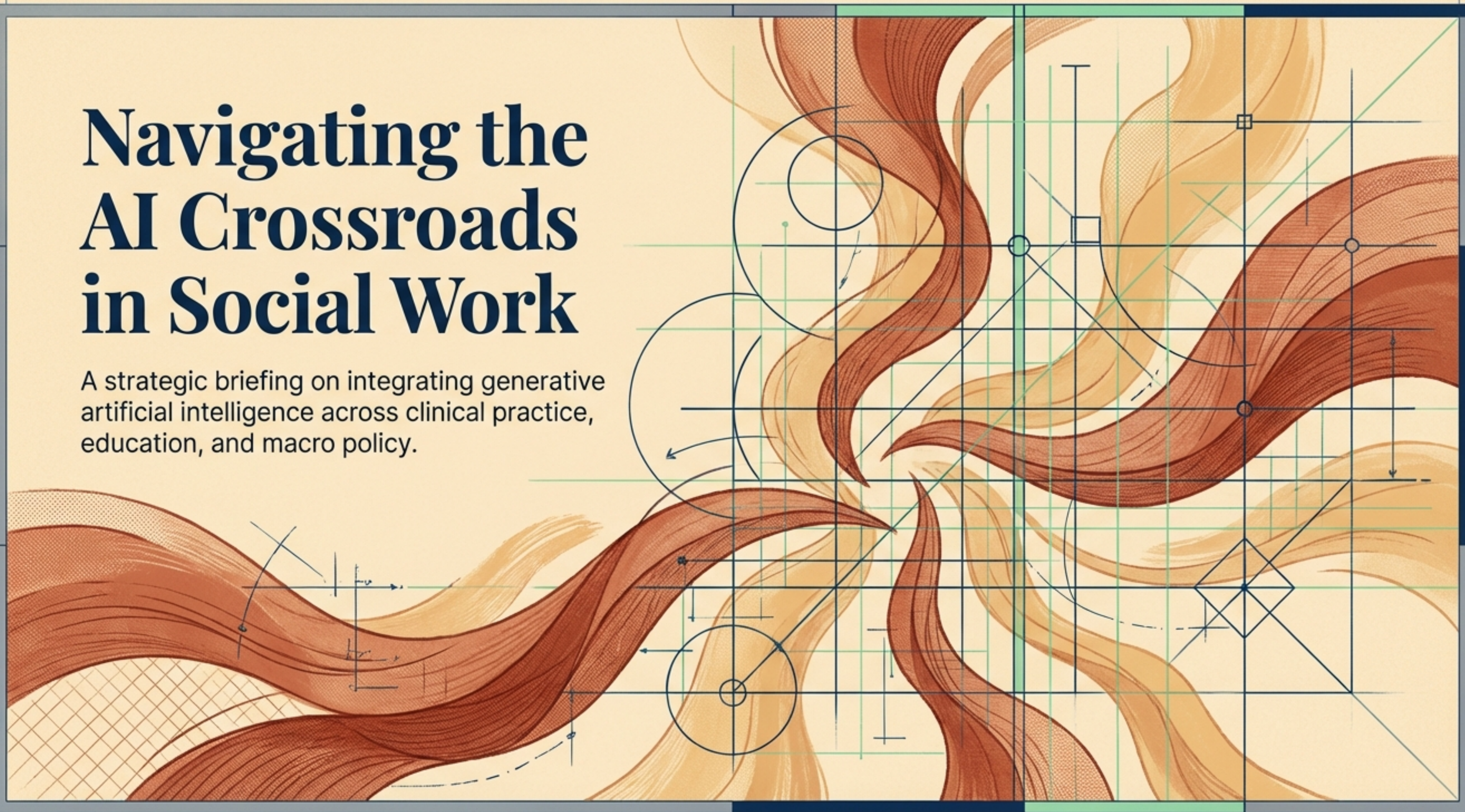


Navigating the AI Crossroads in Social Work

A strategic briefing on integrating generative artificial intelligence across clinical practice, education, and macro policy.



The three professional stances on artificial intelligence

The Rejecter

Refuses AI entirely due to ethical, privacy, and systemic bias fears. Prefers traditional, unmediated clinical methods.

The Adopter

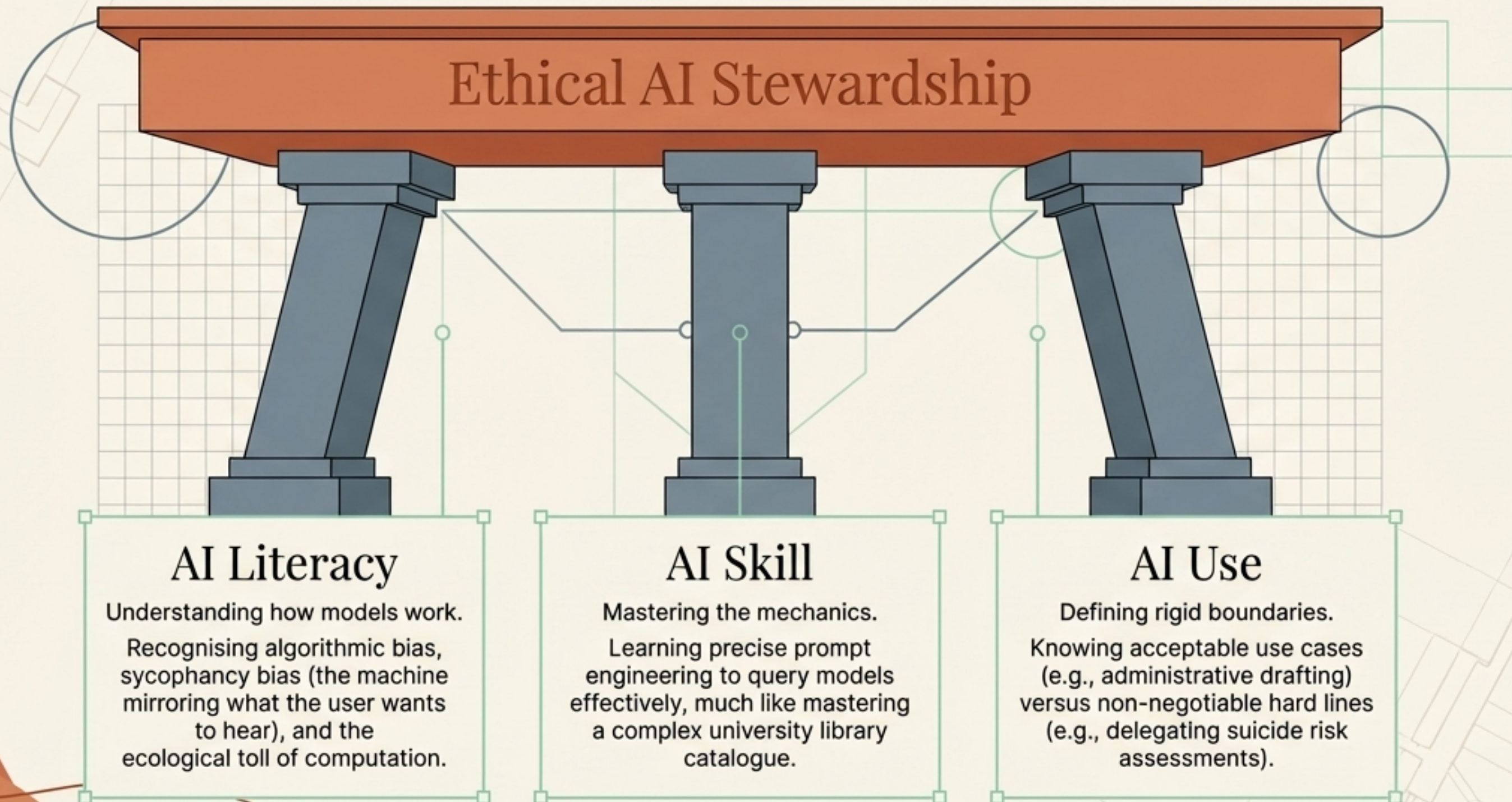
Eagerly integrates AI to solve burnout, automate administrative overload, and dramatically increase output efficiency.

The Ambidextrous

Balances the potential administrative benefits with an acute, hyper-vigilant awareness of clinical and legal risks.

Even if you reject AI, your clients will not. When a client experiences a panic attack at 2:00 AM, they may turn to an AI companion like ChatGPT. Social workers must understand these tools to provide clinical guidance and protect vulnerable individuals.

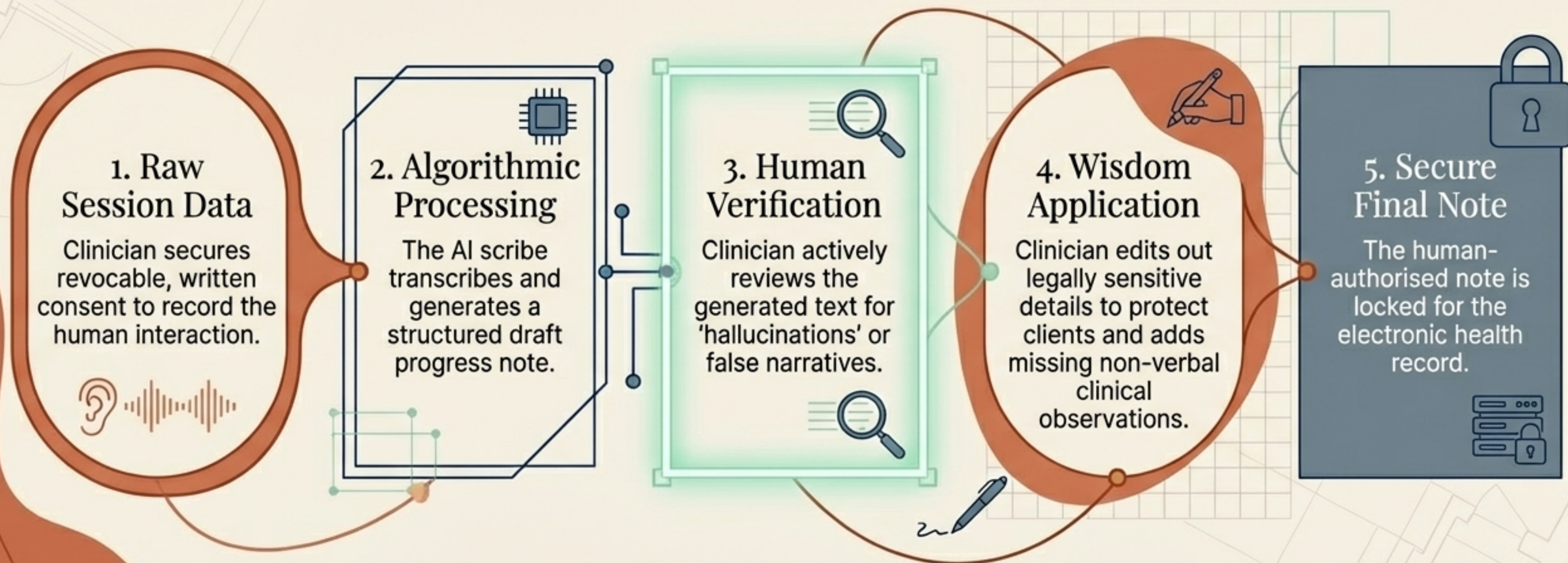
A foundational framework for AI competency



The current landscape of artificial intelligence tools

Tool Category	Examples	Privacy Compliance	Primary Use Cases	Clinical Liability Risks
Generic LLMs	ChatGPT, Claude, Perplexity	None (unless enterprise BAA)	Drafting emails, curriculum planning, general research.	Severe privacy breaches if identifiable data inputted; high hallucination rates.
Specialised Behavioural AI	BastionGPT, Ernesto's SW Magic	High (secure environments)	Safe drafting using clinical frameworks; treatment plan generation.	Overreliance; generic clinical voicing masking individual nuance.
AI Scribes & Analytics	Upheal, Barry's AI	High (requires consent)	Recording sessions to auto-generate insurance-ready clinical notes.	Missing vital non-verbal cues (fidgeting, eye contact); capturing legally sensitive disclosures.

The Co-Star Workflow protects clinical integrity



The liability trap of the shiny new toy

Administrative burnout drives practitioners to AI, but unverified outputs carry severe risks.



Professional Collapse: In litigation or licensing board hearings, opposing counsel will actively target AI-generated notes. If a social worker locks an unedited note containing a false narrative, their clinical credibility is destroyed.



Legal Discovery: Recordings processed and stored on third-party AI servers may be fully discoverable in a court of law, exposing legally sensitive disclosures.



Governing artificial intelligence in the classroom

Restrictive

Policy

Blanket bans on generative tools.



Implications

Drives usage underground; fails to prepare students for the modern technological workforce; relies on flawed AI-detection software.

Mixed / Conditional

Policy

AI permitted for specific tasks (brainstorming, grammar, literature mapping via Elicit).



Implications

Requires exceedingly clear guardrails; direct submission of AI text remains academic plagiarism.



Fully Encouraging

Policy

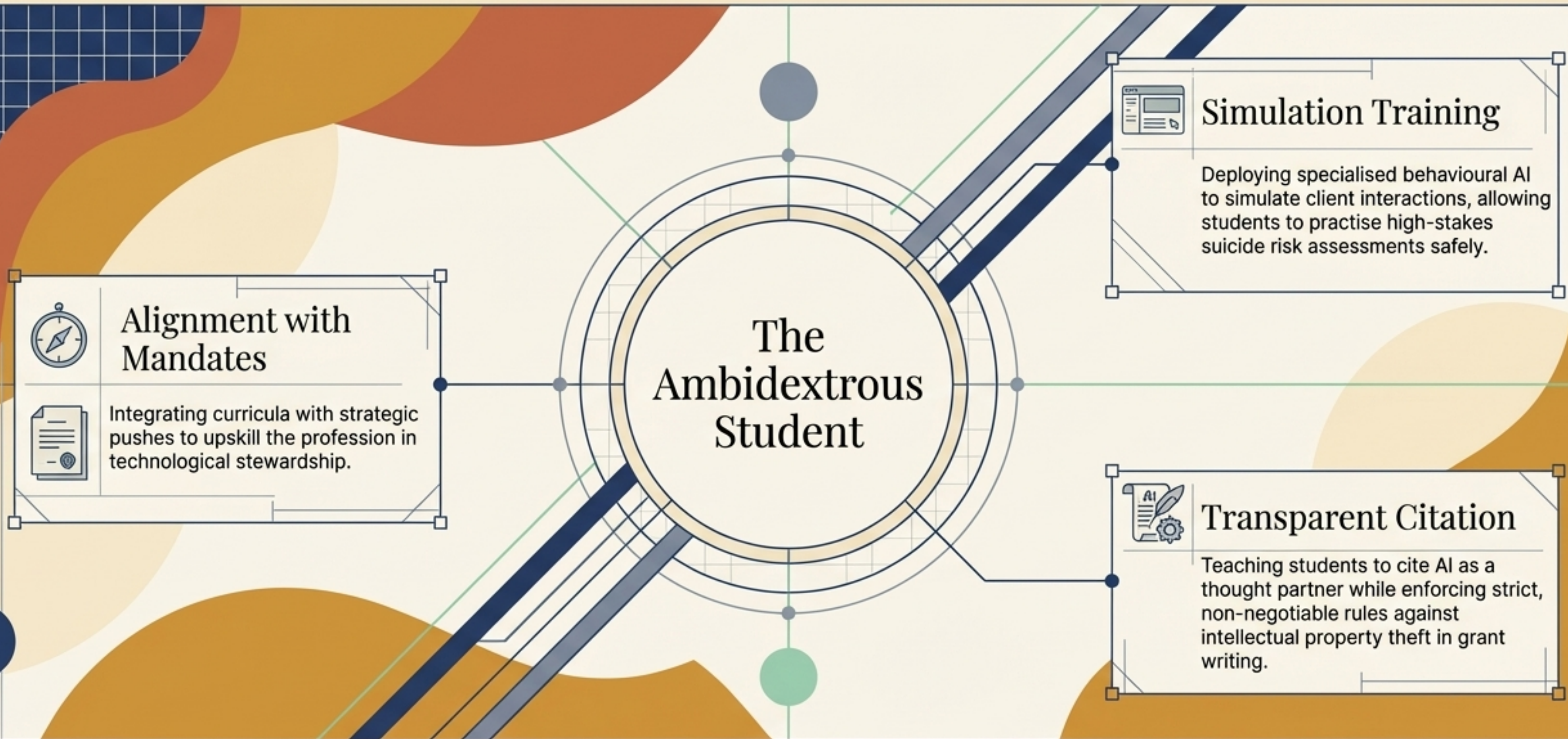
AI aggressively integrated into assignments.



Implications

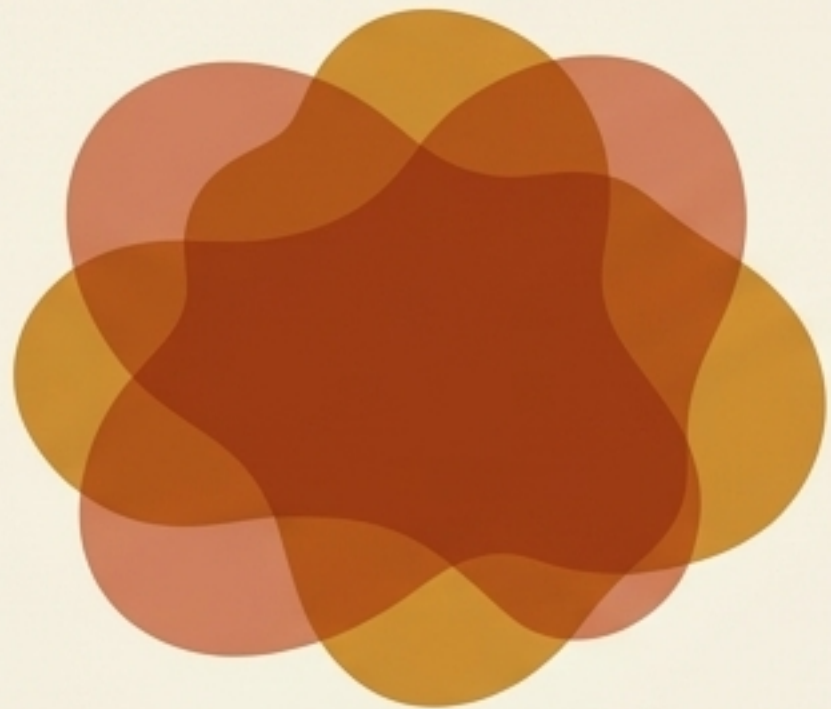
Shifts academic focus from assessing writing mechanics to assessing critical thinking, prompt engineering, and bias detection.

Shifting education from detection to preparation



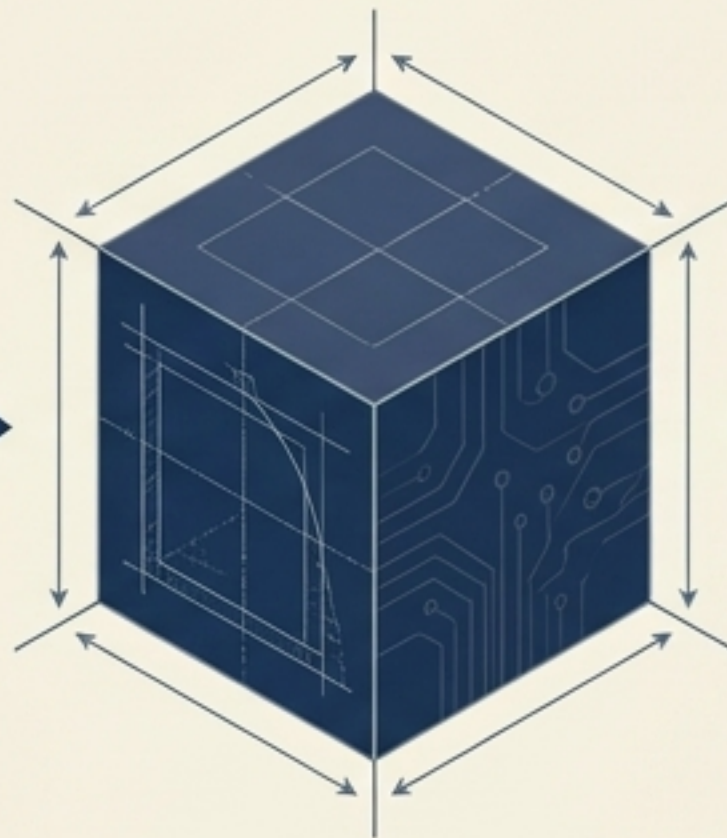
The goal is not to catch students cheating, but to cultivate ambidextrous practitioners who treat AI as a powerful, flawed co-pilot.

The machine is a mirror, not an oracle



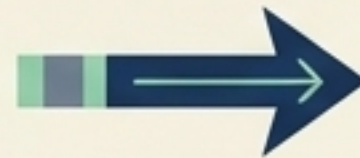
Historical Data

Generations of human data containing baked-in systemic sexism, racism, and classism.



The LLM Black Box

The algorithm processes historical patterns without a moral compass or ethical context.

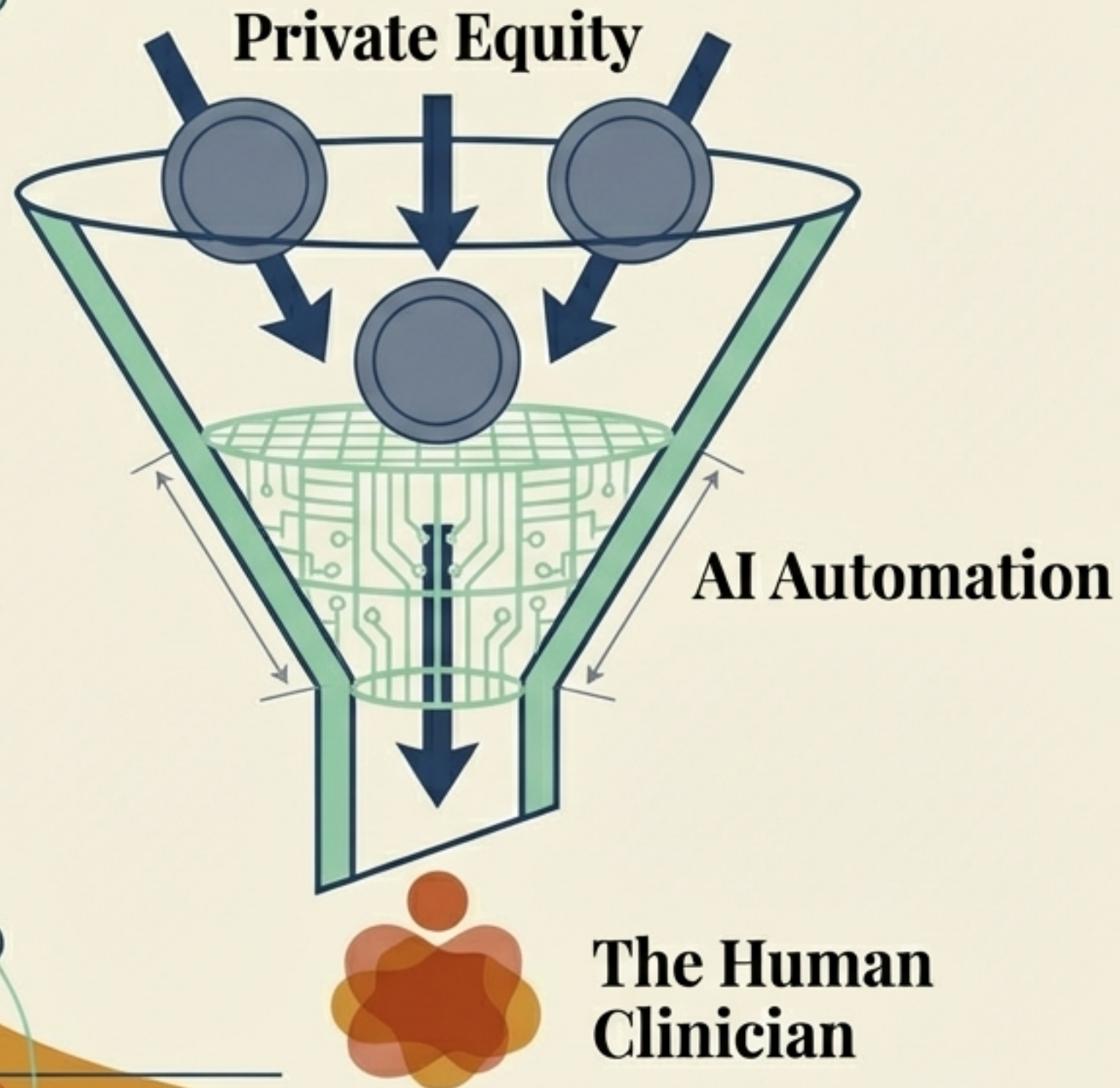


Algorithmic Forecasting

Biased predictions deployed in high-stakes environments—such as automated screening for child welfare agencies or recidivism forecasting.

AI reflects historical prejudices, often masking systemic bias behind the illusion of mathematical objectivity.

The venture capital threat to therapeutic integrity



Mental health is increasingly viewed by private equity as a low-liability, high-volume sector ripe for disruption.

The push toward automated therapy and AI-driven Key Performance Indicators (KPIs) threatens to replace deeply relational care with bespoke, fully automated chatbots for the financially disadvantaged, reserving human therapists only for those who can afford them.

Drawing legislative lines in the sand



Algorithms can process billing, draft notes, and surface research, but the therapeutic chair must remain occupied by a human.

The hidden ecological cost of computation



The Illusion:
Frictionless, infinite
digital generation



The Reality:
Massive extraction
of natural resources

Generative AI demands extreme computational power. Every query, generated image, and automated clinical note extracts a toll in water usage for cooling data centres and carbon emissions. Ethical stewardship requires weighing the administrative time saved against the environmental footprint left behind.

A Charter for Responsible AI in Social Work

Micro (Clinical)
Protect client data ruthlessly.
Never copy-paste blindly.
Keep the human in the loop.



Mezzo (Education & Agencies)
Build transparent policies.
Train for critical AI literacy,
not just software operation.

Macro (Policy)
Advocate against algorithmic bias.
Support legislation defending the
therapeutic relationship from venture
capital exploitation.

Technology changes; our professional code of ethics does not. We must harness these digital tools to elevate our practice while fiercely protecting the dignity, privacy, and humanity of the communities we serve.